

Laurel Way, Chartham, CT4 7TJ

£1,200 Per Calendar Month

Sally Hatcher
estates



2 1 1 C

Laurel Way

Chartham CT4 7TJ

Located in the sought after village of Chartham is a two bedroom terraced house which has been refurbished throughout. Entrance hallway leading to kitchen with space for under counter washing machine, fridge and freezer. Sitting/diner area over looking rear enclosed garden. Upstairs has one double and one large single bedrooms and a family bathroom with shower over. The property is unfurnished parking is in front of the property.

Available Mid February

Rent £1,200 per calendar month - EXCLUSIVE of all utilities

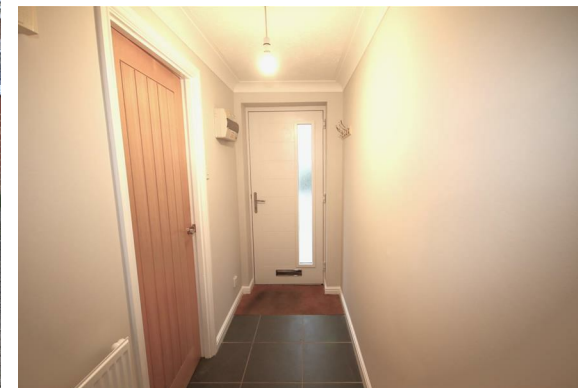
Deposit: £1384.61 (equal to 5 weeks rent) This can be paid anytime until your tenancy begins (EXCLUDING Holding Deposit)

No pets/smokers

Council Tax Band C

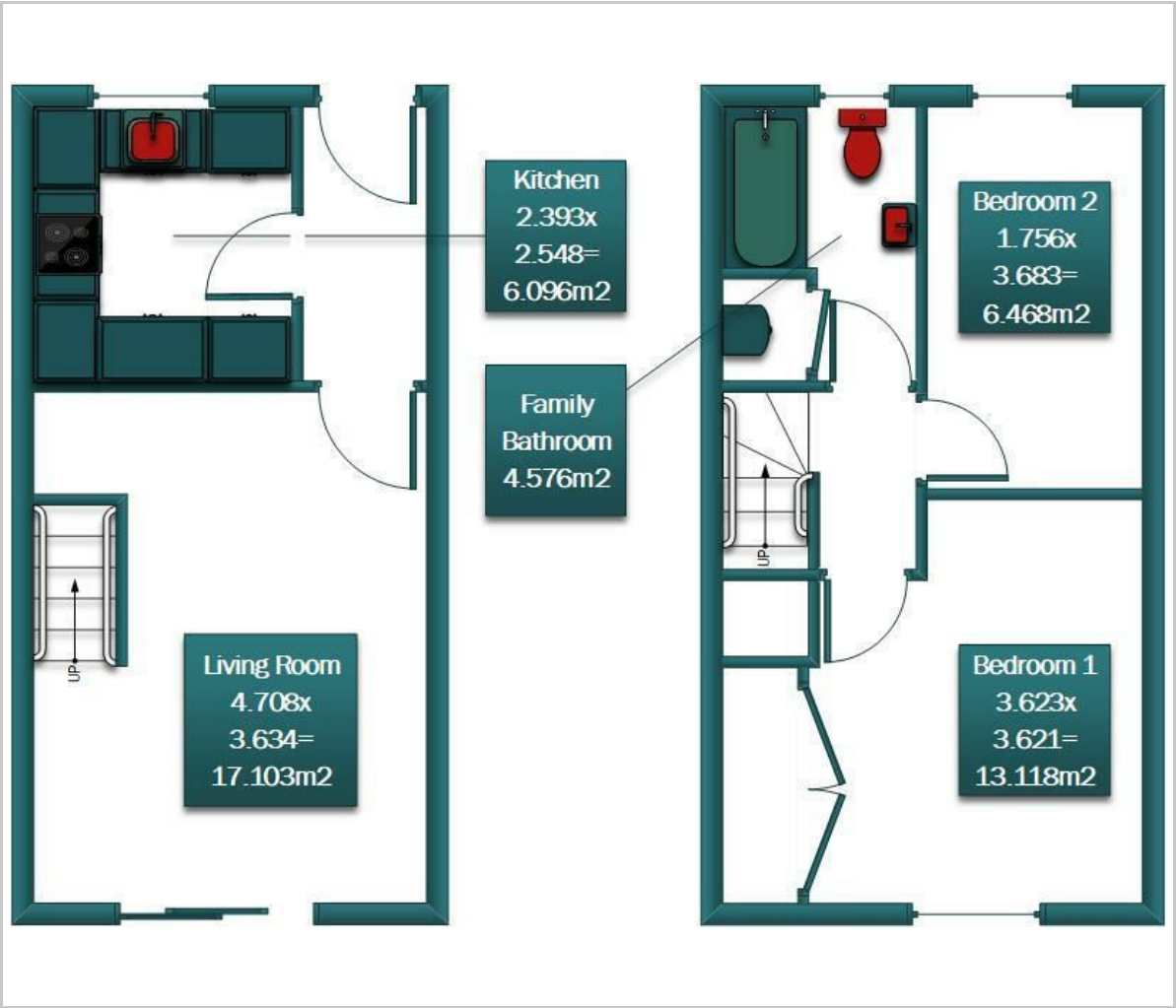
All viewings are strictly by appointment only.

Please refer to the fee's tab on our website (www.sallyhatcher.co.uk) for all information on fee's and deposit option





Floor Plan



Viewing

Please contact us on 01227 733888 if you wish to arrange a viewing appointment for this property or require further information.

These particulars, whilst believed to be accurate are set out as a general outline only for guidance and do not constitute any part of an offer or contract. Intending purchasers should not rely on them as statements of representation of fact, but must satisfy themselves by inspection or otherwise as to their accuracy. No person in this firms employment has the authority to make or give any representation or warranty in respect of the property.

Area Map



Energy Efficiency Graph

